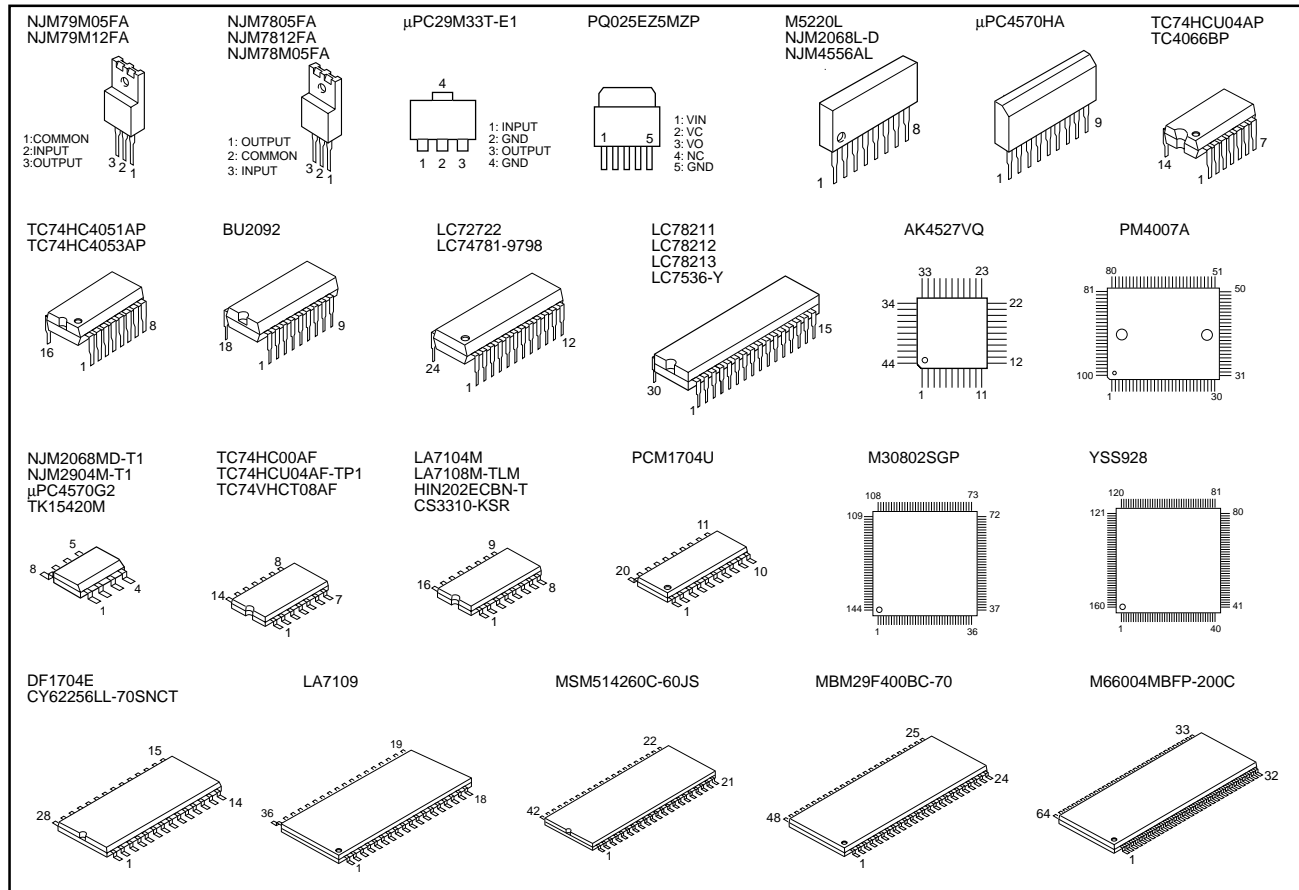
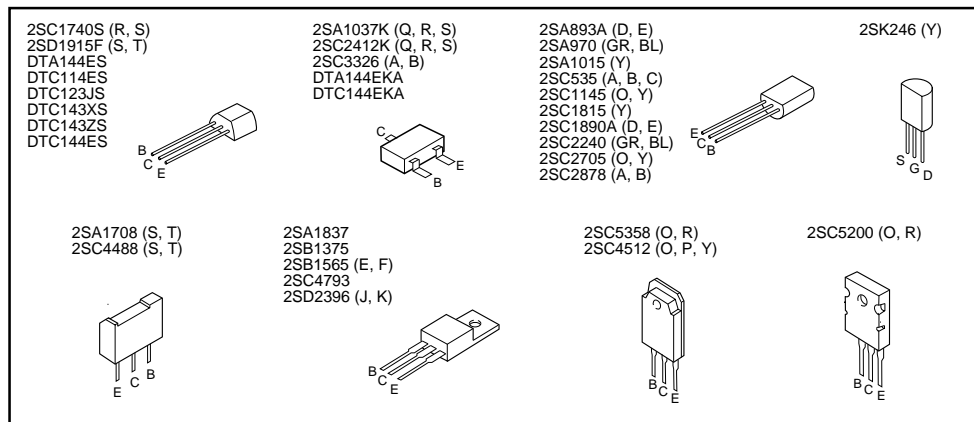


PIN CONNECTION DIAGRAM

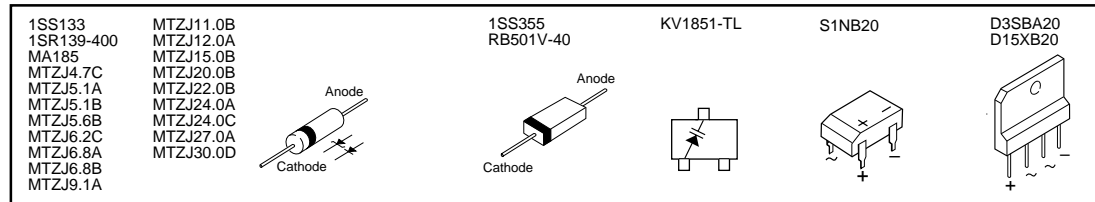
ICs



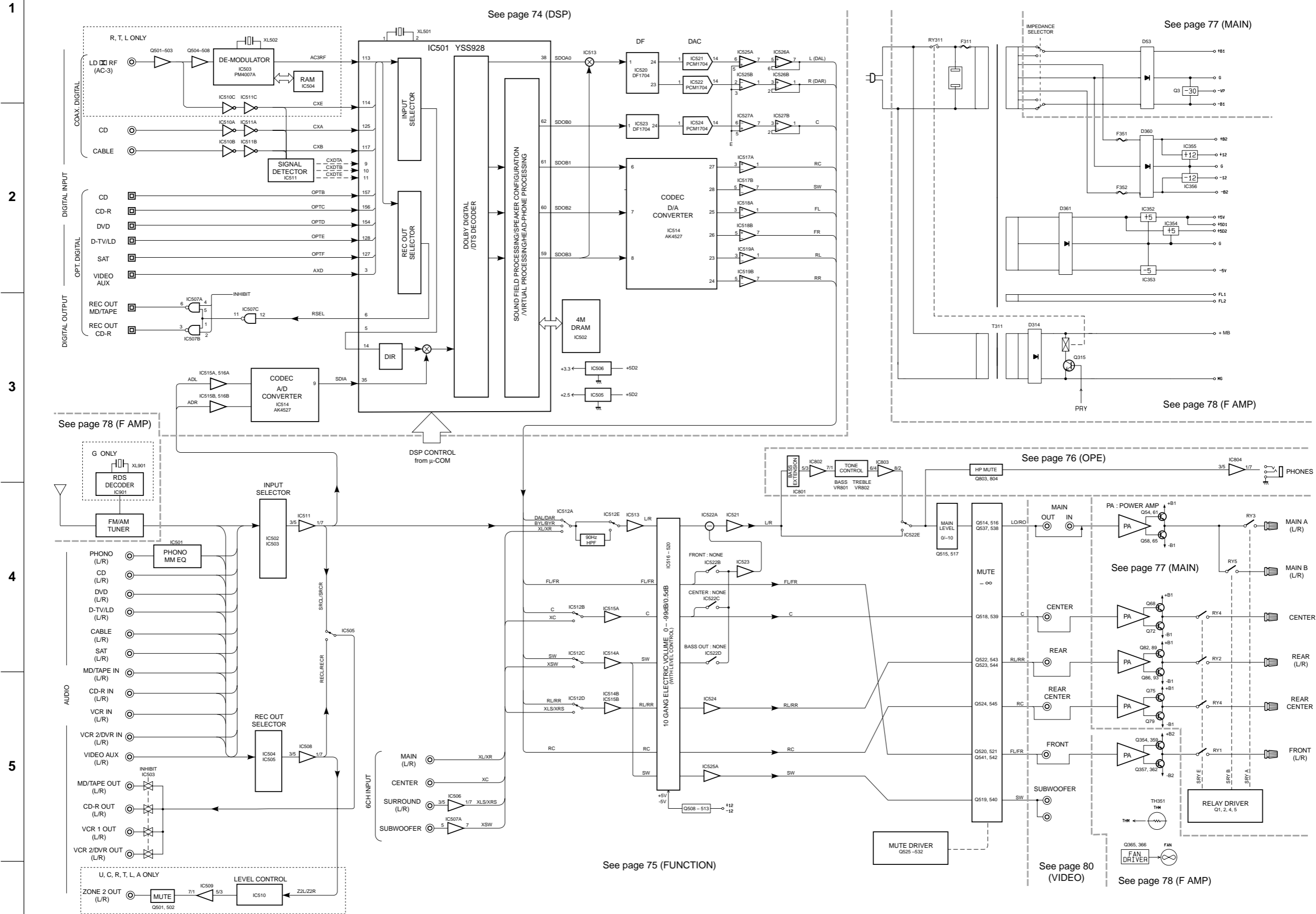
Transistors



Diodes



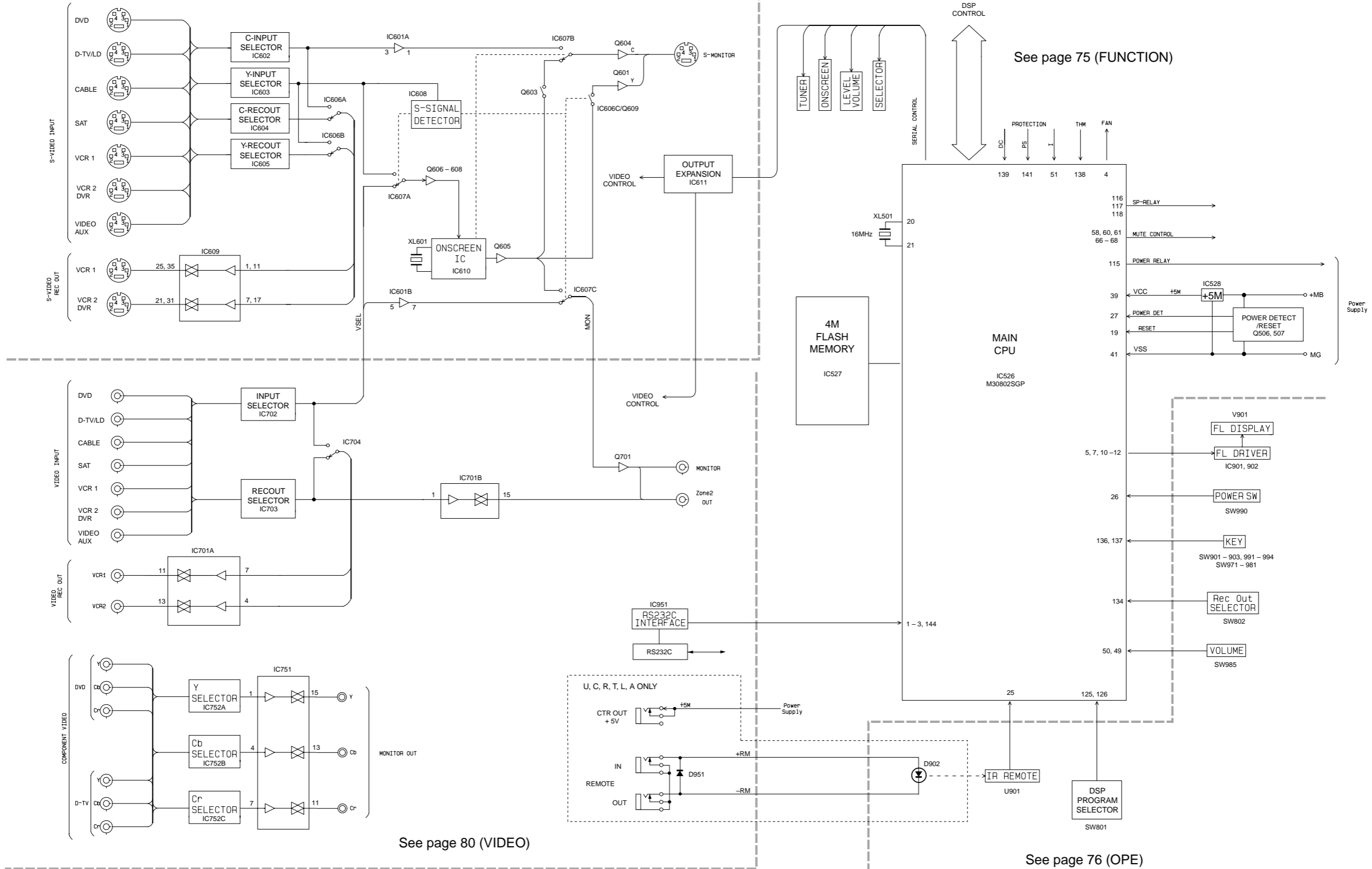
BLOCK DIAGRAM



■ BLOCK DIAGRAM

See page 79 (VIDEO)

See page 75 (FUNCTION)



See page 80 (VIDEO)

See page 76 (OPE)

PRINTED CIRCUIT BOARD (Foil side)

DSP P.C.B.

(Lead Type Device)

DSP P.C.B.

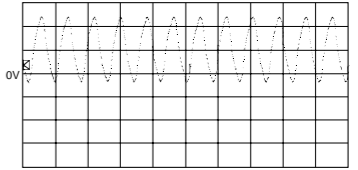
(Surface Mount Device)

TO : OPERATION (4)

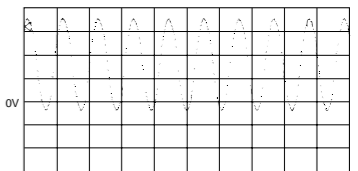
FROM : FUNCTION

- GND
 - DMT
 - /CD
 - SDD
 - +12
 - +5D1
 - 5V
 - E
 - E
 - CAL
 - F
 - RL
 - RR
- INT928
 - SCK
 - SDM
 - CSY
 - 12
 - +5D2
 - ADR
 - E
 - DAR
 - E
 - SW
 - FR
 - RC

Point ① (Pin 1 of IC501)
 V : 2V/div, H : 50 nsec/div
 DC, 1 : 1 probe



Point ② (Pin 56 of IC503)
 V : 2V/div, H : 50 nsec/div
 DC, 1 : 1 probe



Semiconductor Location

Ref. No.	Location	Ref. No.	Location
D501	C2	IC501	C3
D502	C3	IC502	B3
D503	C3	IC503	D3
D504	C3	IC504	D4
D505	C3	IC505	B2
D506	C3	IC506	B2
D507	C3	IC507	F2
D508	F3	IC508	F3
D509	B2	IC509	C3
D510	E3	IC510	F2
D511	C2	IC511	F3
D512	B2	IC512	D3
D513	B2	IC513	B4
D514	F4	IC514	C4
D515	F3	IC515	F5
D516	F4	IC516	F5
D517	F4	IC517	F5
D518	F4	IC518	F5
D519	F4	IC519	G5
D520	G4	IC520	B4
D521	F4	IC521	B4
D522	B5	IC522	B4
D523	E5	IC523	C4
D524	E5	IC524	C4
D525	F5	IC525	E5
D526	E5	IC526	E5
D527	C5	IC527	E5
D528	C5		
D529	C5		
D530	F5		
D531	C5		
D532	F4		
D533	F4		
D534	F4		
D535	G4		
D536	F4		
D537	E5		
D538	E5		
Q501	F2		
Q502	F2		
Q503	G2		
Q504	G2		
Q505	F3		
Q506	D3		
Q507	D3		
Q508	F3		
Q509	E4		
Q510	E4		
Q511	F5		
Q512	F5		
Q513	F5		
Q514	E5		
Q515	B5		
Q516	F5		
Q517	F5		
Q518	G5		
Q519	B5		
Q520	B5		
Q521	B5		
Q522	F5		
Q523	F5		
Q524	F5		
Q525	F5		
Q526	G5		
Q527	F5		

PRINTED CIRCUIT BOARD (Foil side)

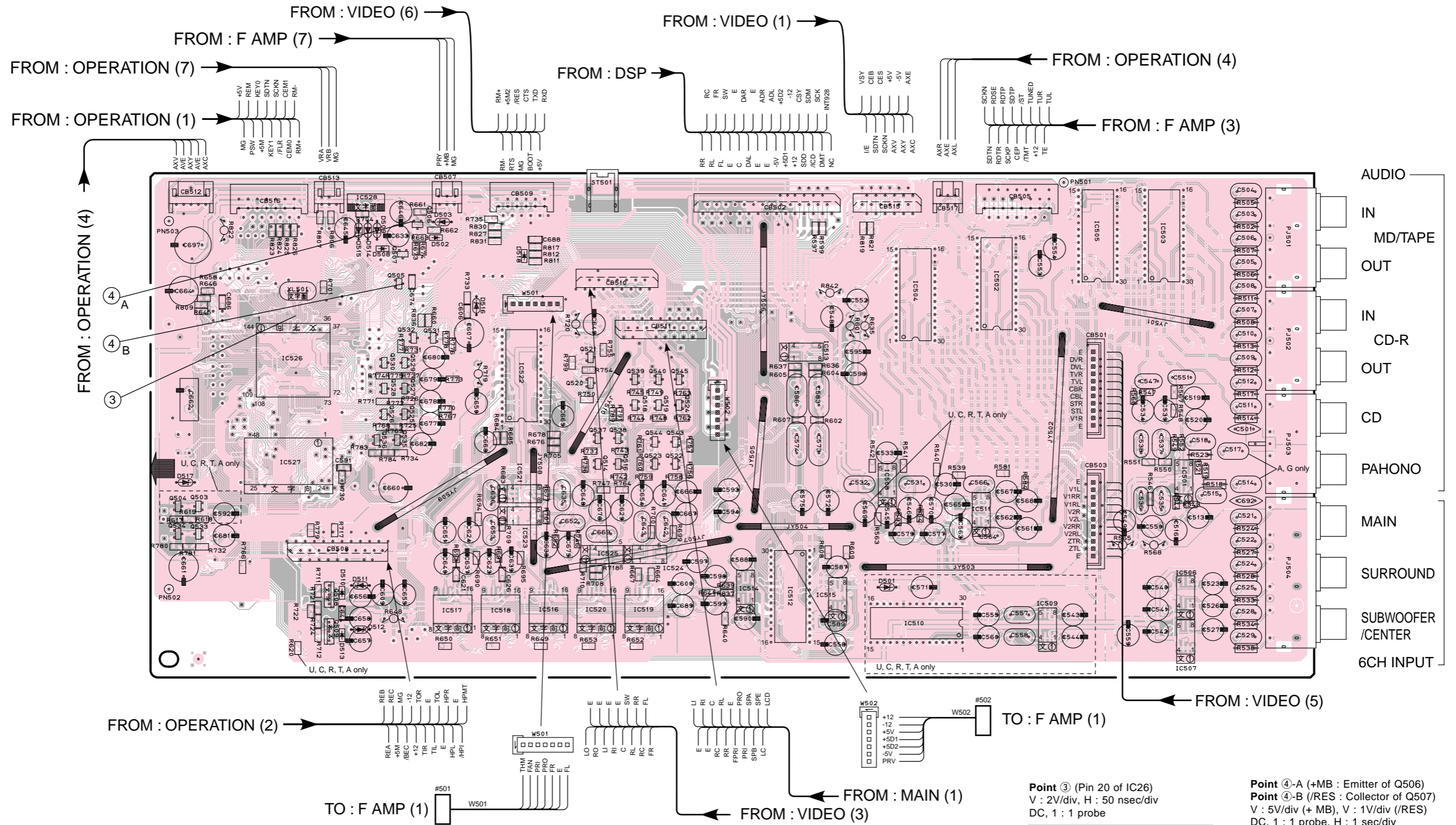
● Semiconductor Location

Ref. No.	Location
D501	F4
D502	C3
D503	C2
D508	C3
D509	C2
D510	C4
D511	C4
D512	C4
D513	C4
D514	C2
D515	C2
D516	D3
D517	B4
D518	D3

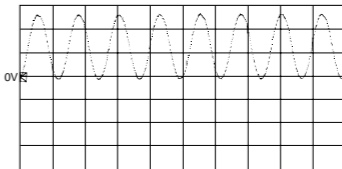
Ref. No.	Location
IC501	G4
IC502	F3
IC503	G2
IC504	F3
IC505	G2
IC506	G4
IC507	G4
IC508	F4
IC509	F4
IC510	F4
IC511	F4
IC512	E4
IC513	E3
IC514	E4
IC515	E4
IC516	D4
IC517	D4
IC518	D4
IC519	D4
IC520	D4
IC521	D4
IC522	D3
IC523	D4
IC524	D4
IC525	D4
IC526	C3
IC527	C4
IC528	C2

Ref. No.	Location
Q503	B4
Q504	B4
Q505	C3
Q506	C2
Q507	C3
Q508	C4
Q509	C4
Q514	D4
Q516	D4
Q518	D3
Q519	D3
Q520	D3
Q521	D3
Q522	E4
Q523	D4
Q524	E3
Q525	C3
Q526	C3
Q527	C3
Q528	C3
Q529	C3
Q530	C3
Q531	C3
Q532	C3
Q533	B4
Q534	B4
Q535	C3
Q536	C3
Q537	D3
Q538	D3
Q539	D3
Q540	D3
Q543	E3
Q544	D3
Q545	E3

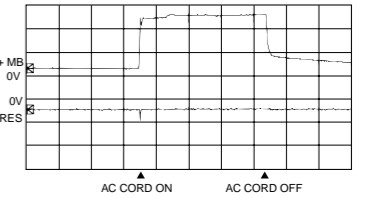
FUNCTION P.C.B.
(Lead Type Device)



Point ③ (Pin 20 of IC26)
V : 2V/div, H : 50 nsec/div
DC, 1 : 1 probe



Point ④-A (+MB : Emitter of Q506)
Point ④-B (/RES : Collector of Q507)
V : 5V/div (+ MB), V : 1V/div (/RES)
DC, 1 : 1 probe, H : 1 sec/div

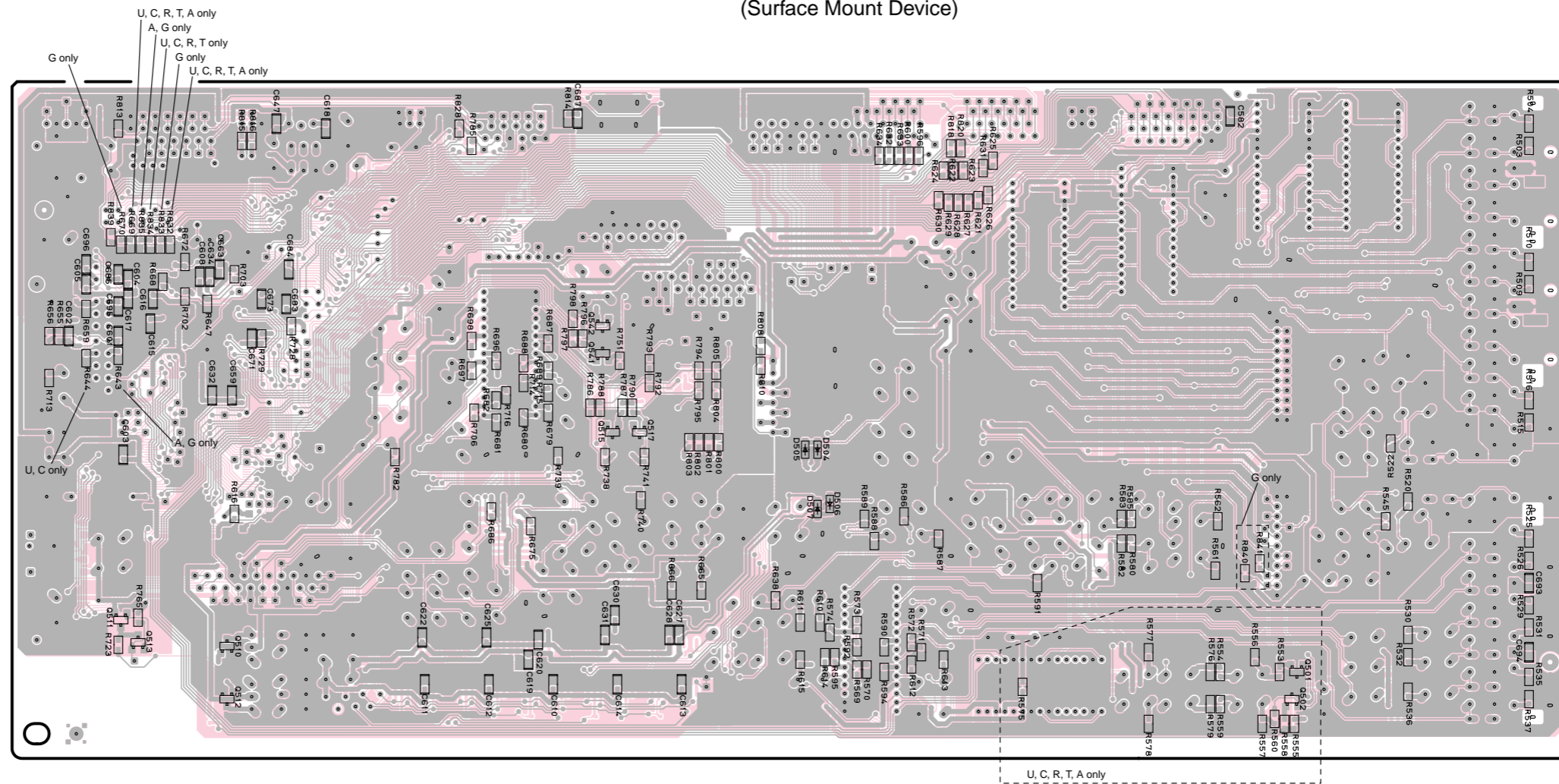


PRINTED CIRCUIT BOARD (Foil side)

● Semiconductor Location

Ref. No.	Location	Ref. No.	Location
D504	E3	Q501	F4
D505	E3	Q502	F4
D506	E4	Q510	C4
D507	E4	Q511	B4
		Q512	C4
		Q513	B4
		Q515	D3
		Q517	D3
		Q541	D3
		Q542	D3

FUNCTION P.C.B.
(Surface Mount Device)



1

2

3

4

5

6

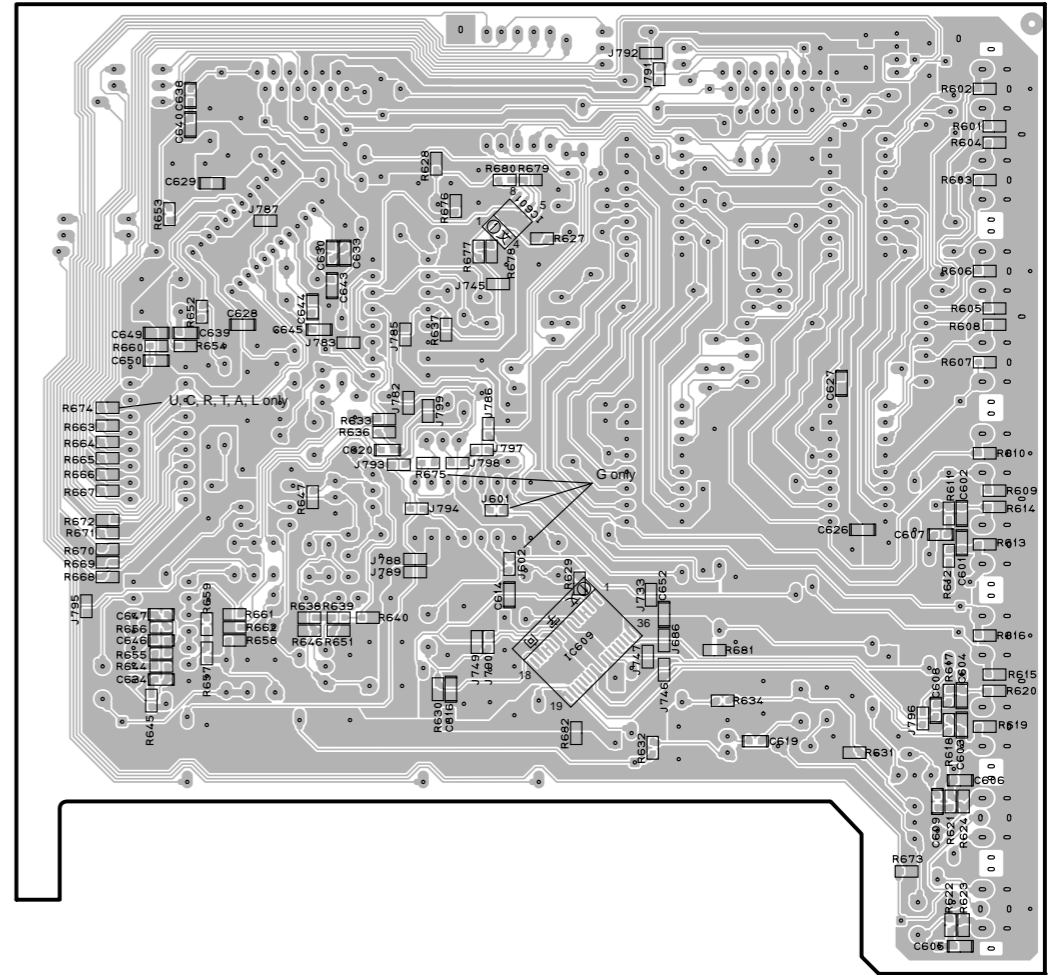
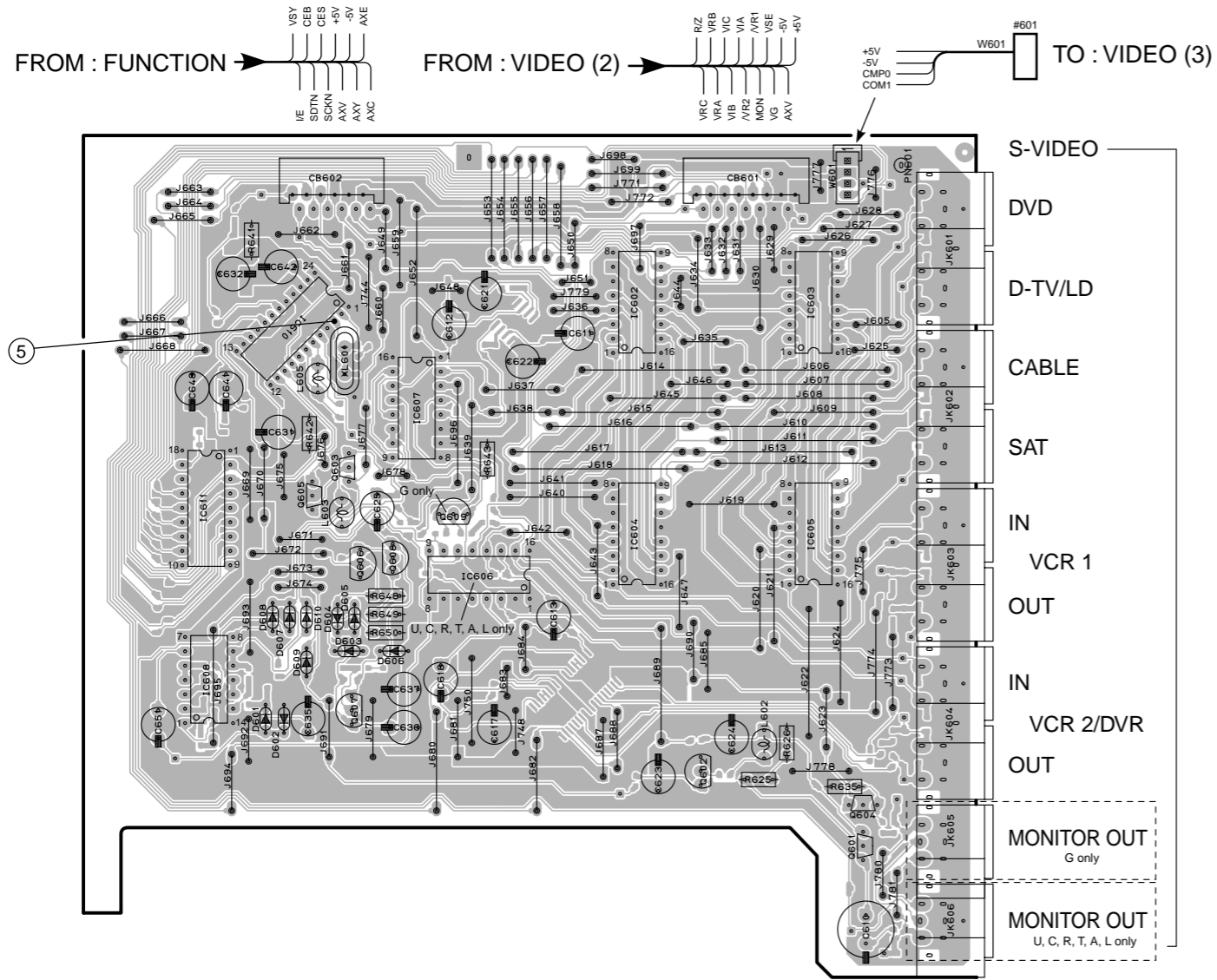
PRINTED CIRCUIT BOARD (Foil side)

VIDEO (1) P.C.B.

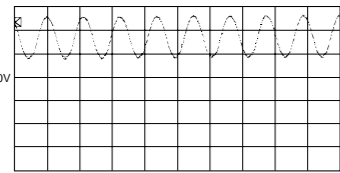
(Lead Type Device)

VIDEO (1) P.C.B.

(Surface Mount Device)



Point ⑤ (Pin 3 of IC610)
 V : 1V/div, H : 50 nsec/div
 DC, 1 : 1 probe



● Semiconductor Location

Ref. No.	Location	Ref. No.	Location	Ref. No.	Location
D601	B4	IC601	F2	Q601	D4
D602	B4	IC602	C2	Q602	C4
D603	B3	IC603	D2	Q603	B3
D604	B3	IC604	C3	Q604	D4
D605	B3	IC605	D3	Q605	B3
D606	B3	IC606	C3	Q606	B3
D607	B3	IC607	B3	Q607	B3
D608	B3	IC608	B3	Q608	B3
D609	B3	IC609	G3	Q609	B3
D610	B3	IC610	B2		
D611	B3	IC611	B3		

PRINTED CIRCUIT BOARD (Foil side)

1

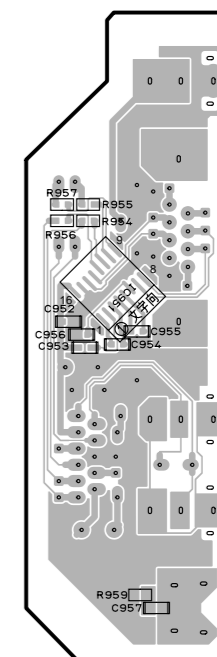
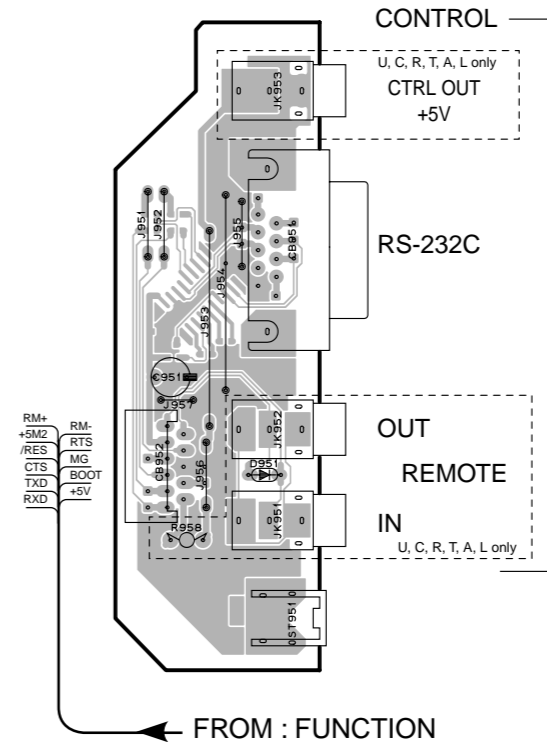
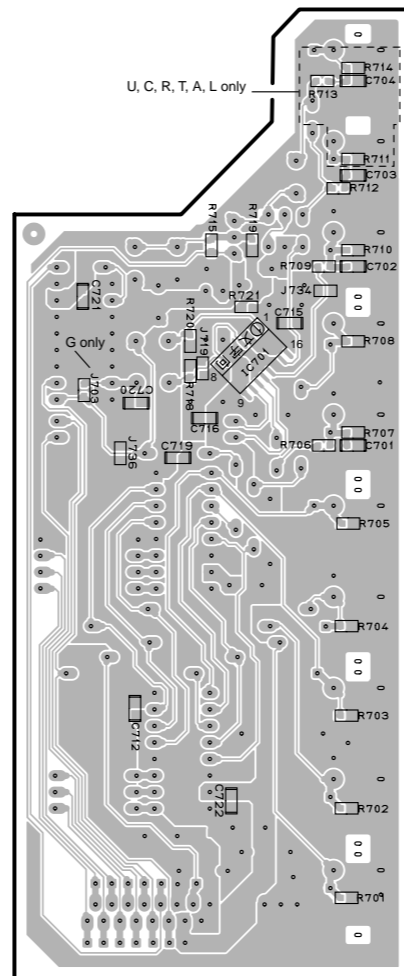
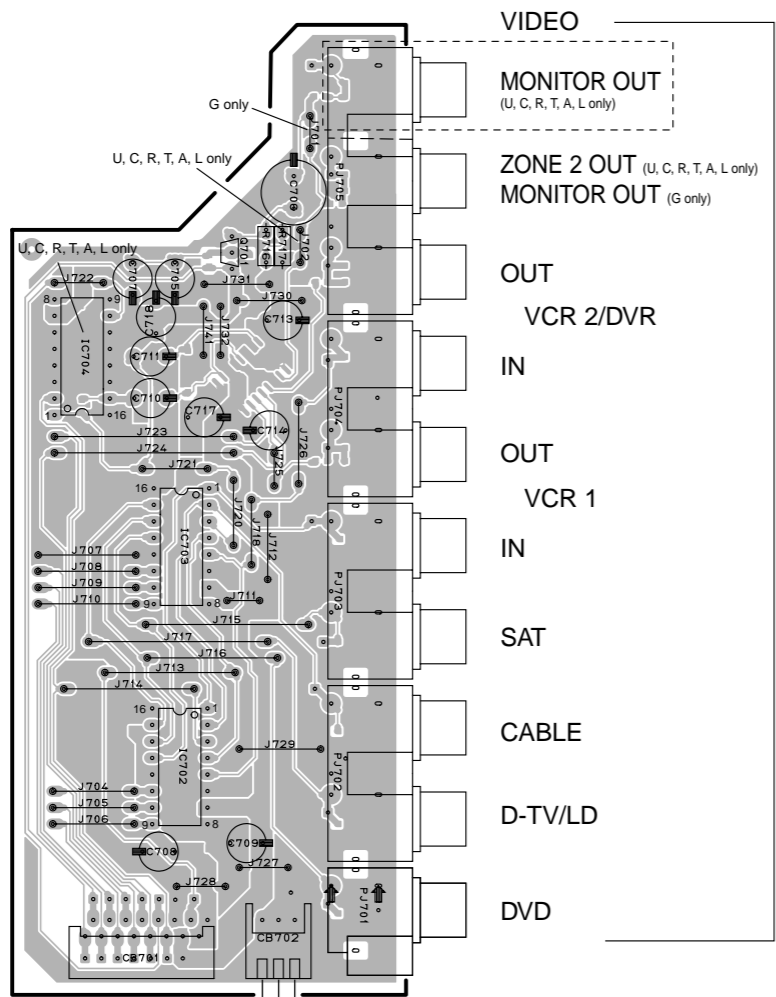
VIDEO (2) P.C.B. (Lead Type Device)

VIDEO (2) P.C.B. (Surface Mount Device)

VIDEO (6) P.C.B. (Lead Type Device)

VIDEO (6) P.C.B. (Surface Mount Device)

2



3

4

5

6

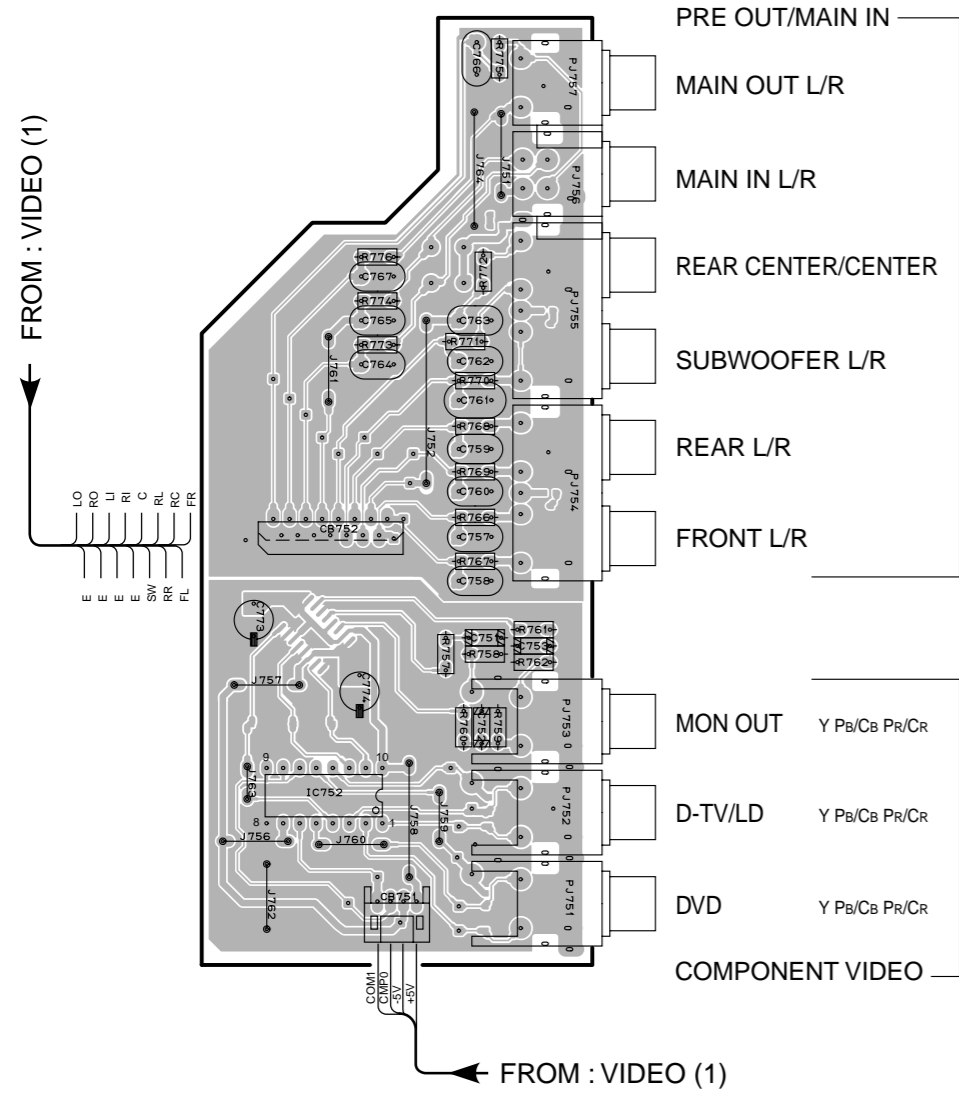
Semiconductor Location

Ref. No.	Location
D951	F3
IC701	D2
IC702	B3
IC703	B3
IC704	A2
IC951	G2
Q701	B2

PRINTED CIRCUIT BOARD (Foil side)

VIDEO (3) P.C.B.

(Lead Type Device)

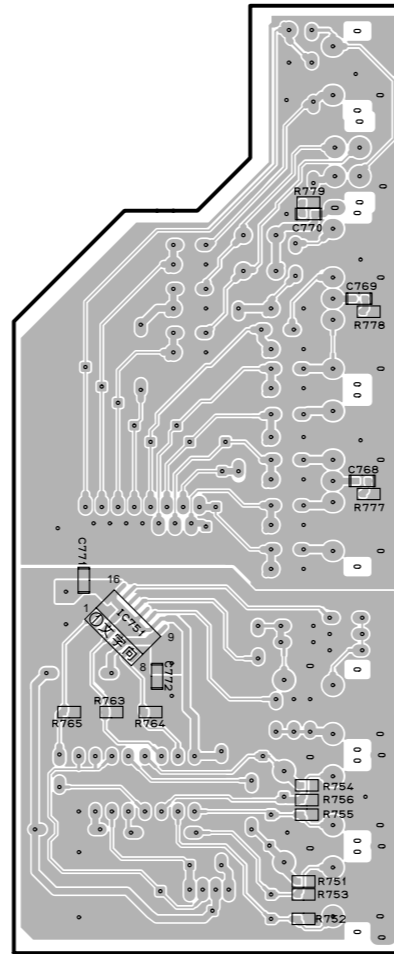


Semiconductor Location

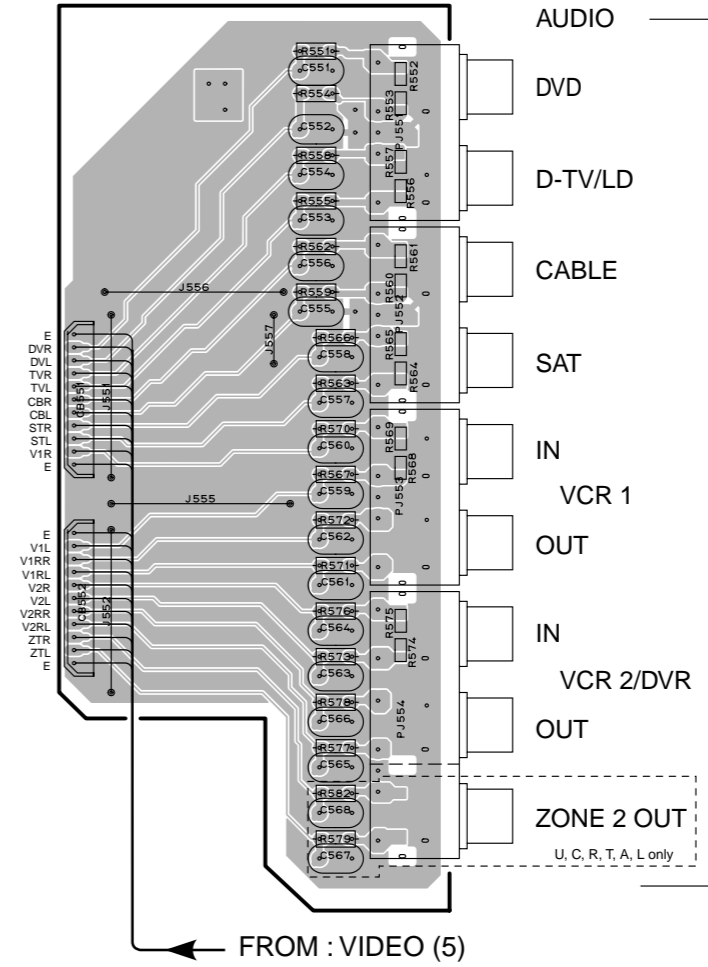
Ref. No.	Location
IC751	D3
IC752	B4

VIDEO (3) P.C.B.

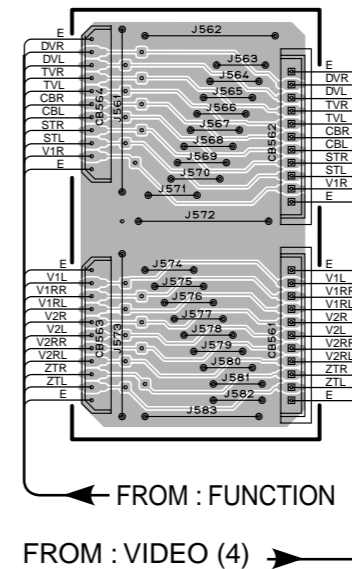
(Surface Mount Device)



VIDEO (4) P.C.B.

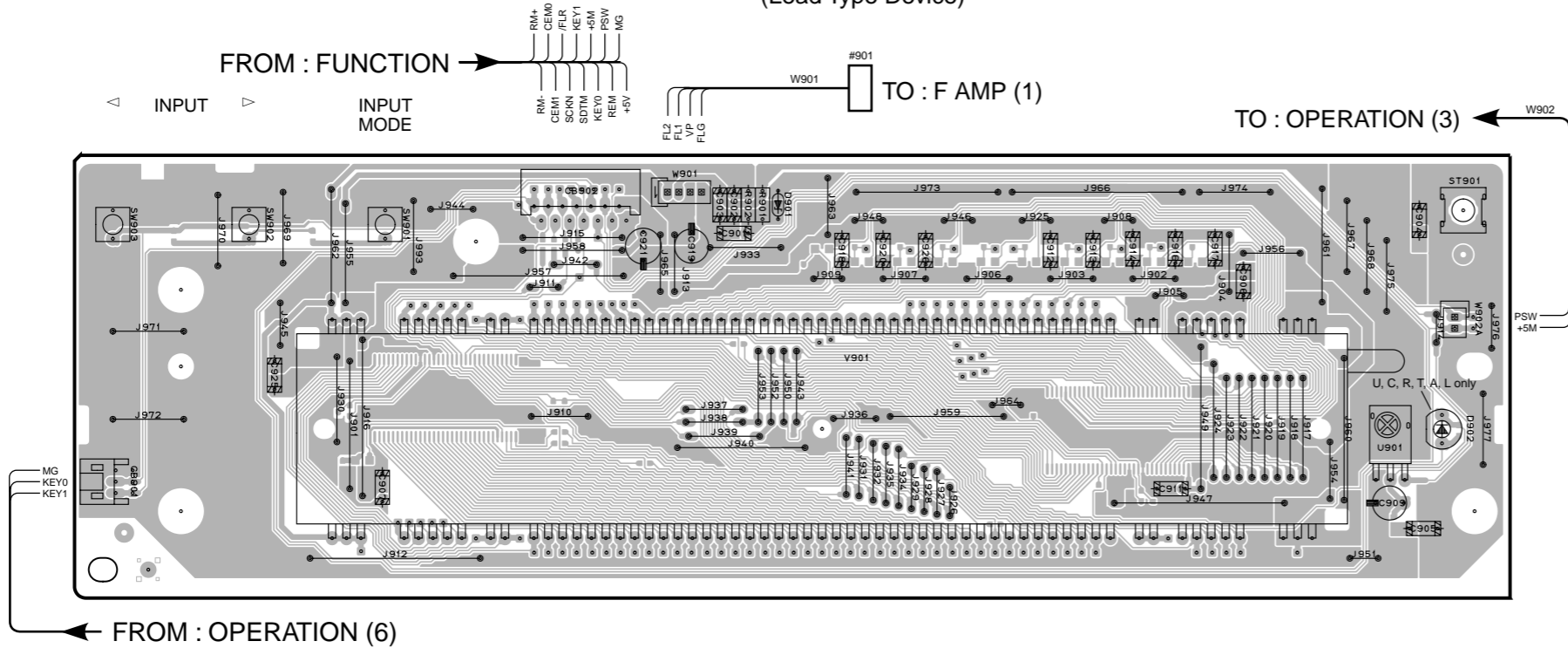


VIDEO (5) P.C.B.

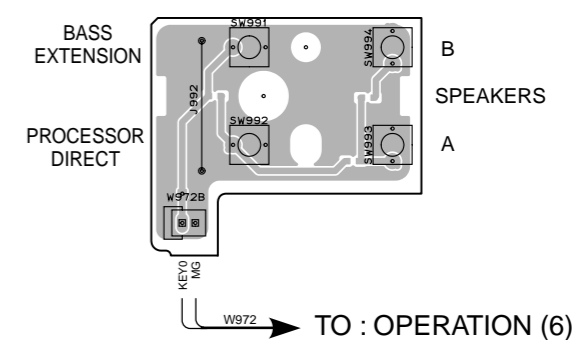


PRINTED CIRCUIT BOARD (Foil side)

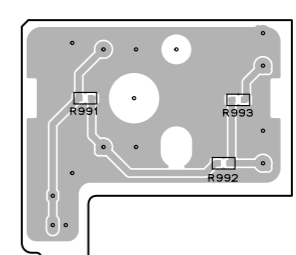
OPERATION (1) P.C.B. (Lead Type Device)



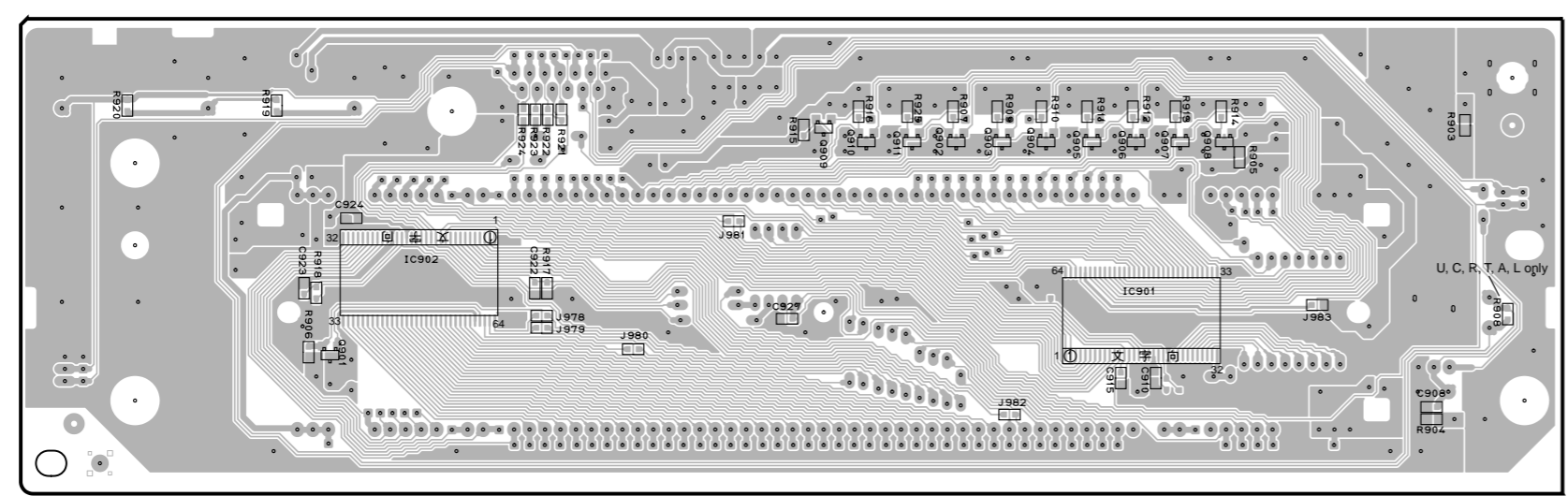
OPERATION (5) P.C.B. (Lead Type Device)



OPERATION (5) P.C.B. (Surface Mount Device)



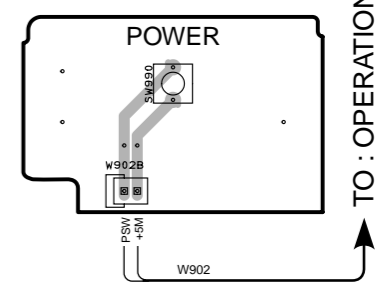
OPERATION (1) P.C.B. (Surface Mount Device)



Semiconductor Location

Ref. No.	Location
D901	C2
D902	E3
IC901	D5
IC902	B5
Q901	B5
Q902	D5
Q903	D5
Q904	D5
Q905	D5
Q906	D5
Q907	D5
Q908	D5
Q909	C5
Q910	C5
Q911	D5

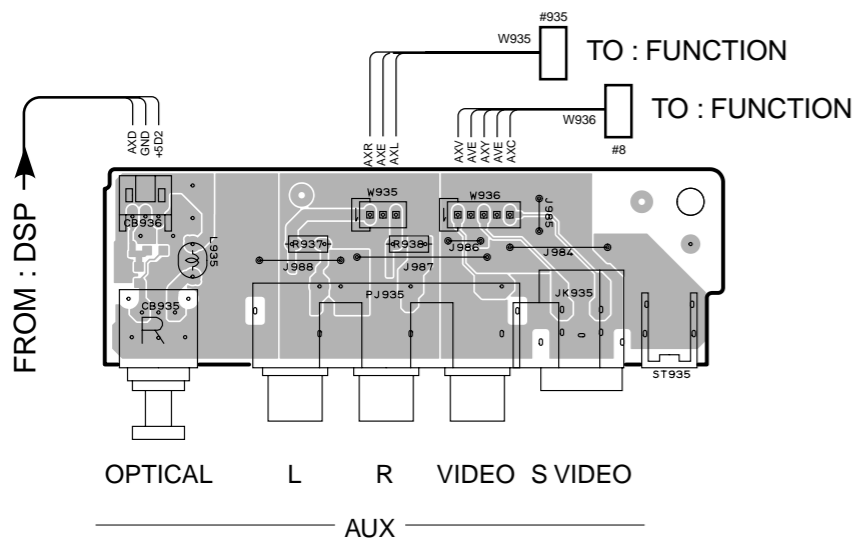
OPERATION (3) P.C.B.



PRINTED CIRCUIT BOARD (Foil side)

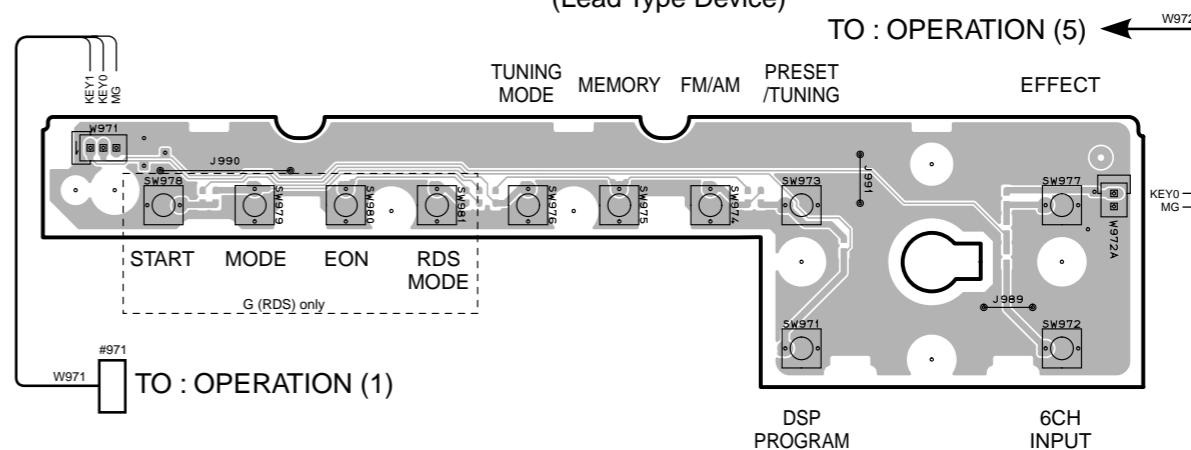
OPERATION (4) P.C.B.

(Lead Type Device)



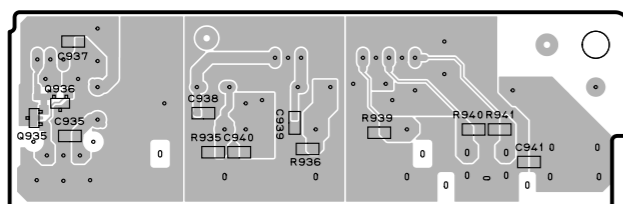
OPERATION (6) P.C.B.

(Lead Type Device)



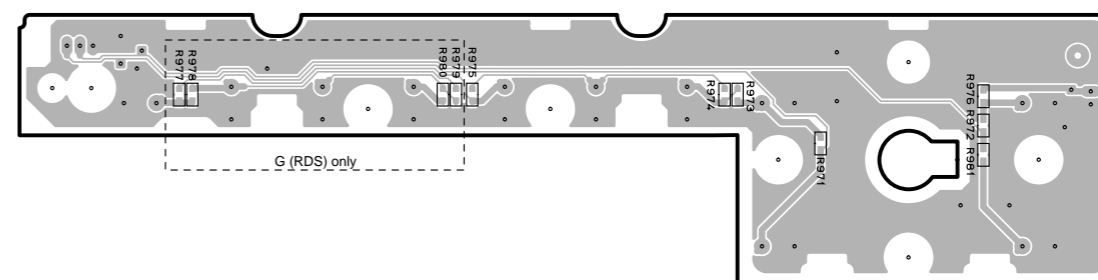
OPERATION (4) P.C.B.

(Surface Mount Device)



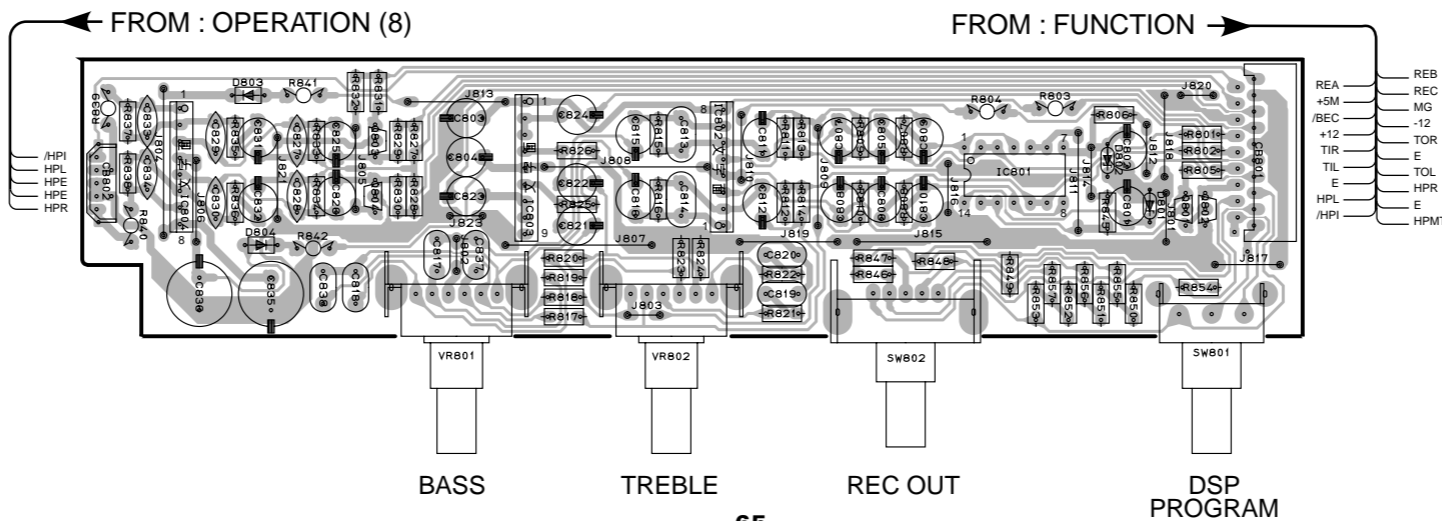
OPERATION (6) P.C.B.

(Surface Mount Device)



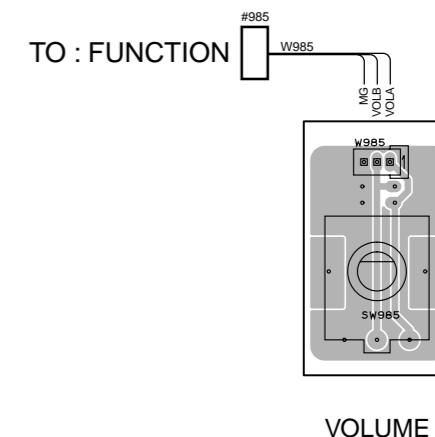
OPERATION (2) P.C.B.

FROM : FUNCTION →



OPERATION (7) P.C.B.

TO : FUNCTION



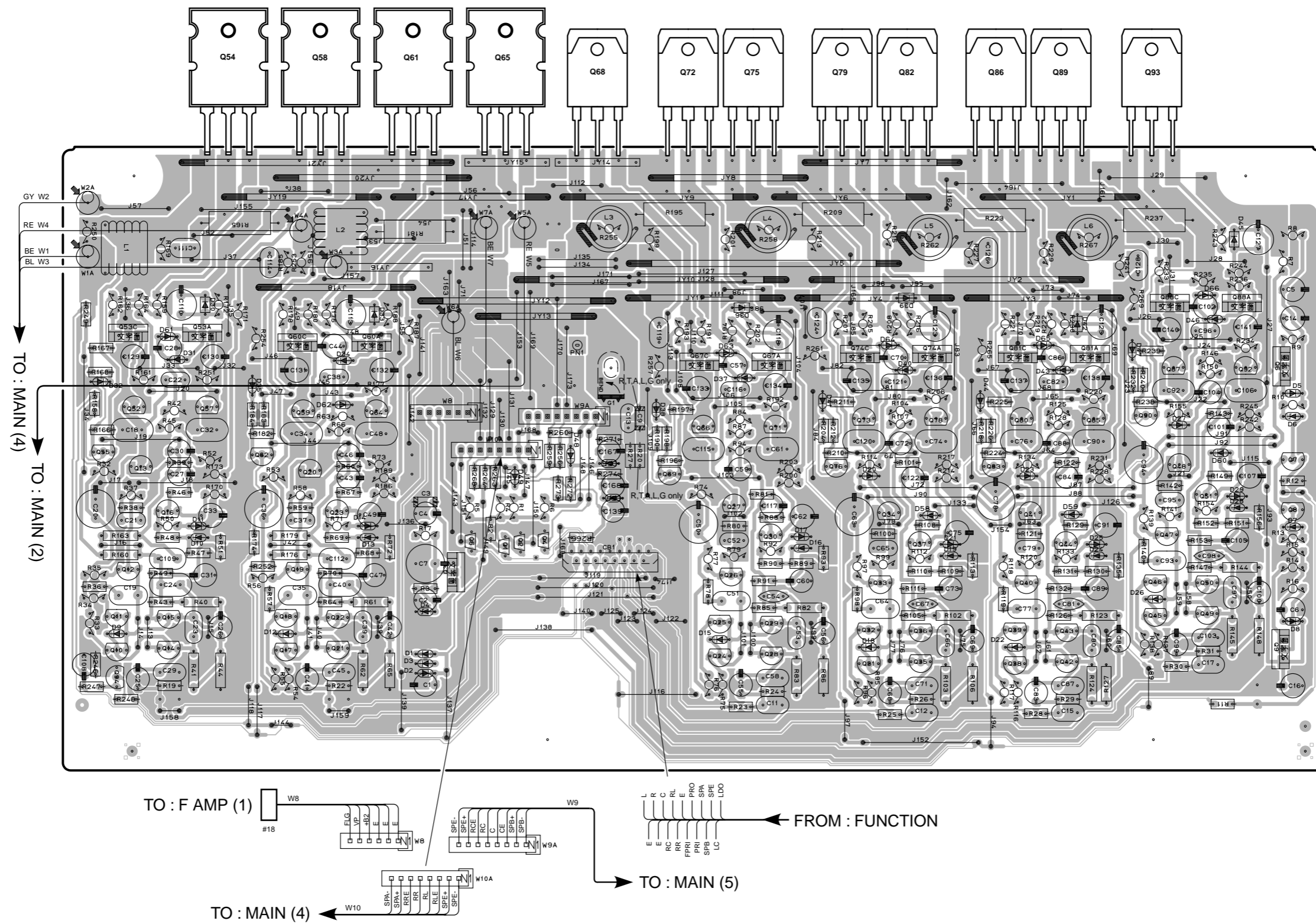
VOLUME

• Semiconductor Location

Ref. No.	Location	Ref. No.	Location	Ref. No.	Location
D801	F5	IC801	E5	Q801	F5
D802	F5	IC802	E5	Q802	F5
D803	C5	IC803	D5	Q803	D5
D804	C5	IC804	C5	Q804	D5
				Q935	A4
				Q936	A4

PRINTED CIRCUIT BOARD (Foil side)

MAIN (1) P.C.B.



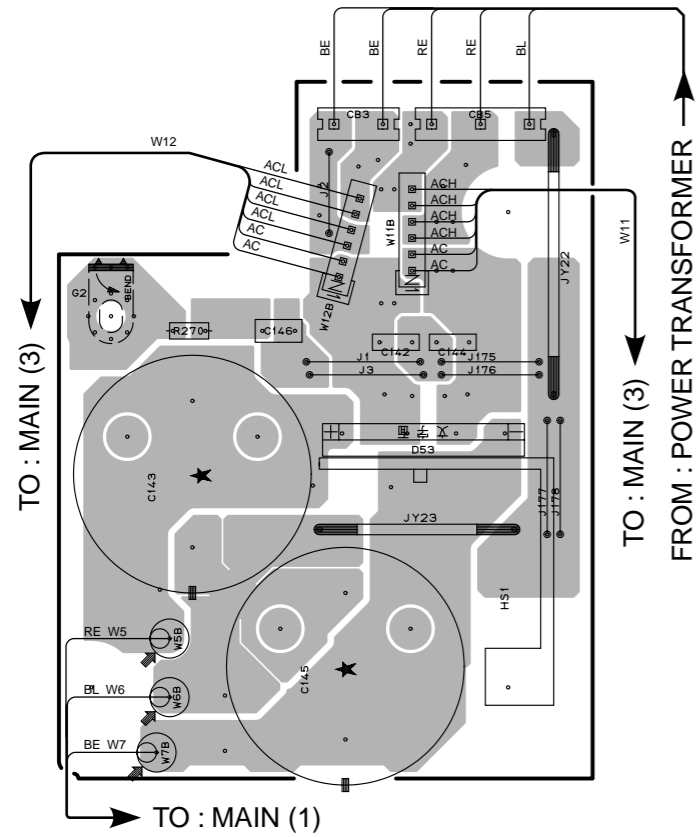
● Semiconductor Location

Ref. No.	Location	Ref. No.	Location
D1	C4	Q1	C4
D2	C4	Q2	C4
D3	C4	Q3	C4
D4	C4	Q4	C4
D5	G3	Q5	C4
D6	G3	Q6	G3
D7	G4	Q7	G3
D8	G4	Q8	G4
D9	A4	Q9	G4
D10	B4	Q10	A4
D11	B4	Q11	A4
D12	B4	Q12	B4
D13	C4	Q13	B3
D14	C4	Q14	B4
D15	D4	Q15	B4
D16	E4	Q16	B4
D17	E4	Q17	B4
D18	E4	Q18	B4
D19	E4	Q19	B4
D20	E3	Q20	B3
D21	E4	Q21	B4
D22	F4	Q22	B4
D23	F3	Q23	B4
D24	F4	Q24	D4
D25	F4	Q25	D4
D26	F4	Q26	D4
D27	F3	Q27	D4
D28	G4	Q28	D4
D29	G3	Q29	D4
D30	B3	Q30	D4
D31	B3	Q31	E4
D32	A3	Q32	E4
D33	C3	Q33	E4
D34	C3	Q34	E4
D35	B3	Q35	E4
D36	D3	Q36	E4
D37	D3	Q37	E4
D38	D3	Q38	F4
D39	E3	Q39	F4
D40	E3	Q40	F4
D41	E3	Q41	F4
D42	F3	Q42	F4
D43	F3	Q43	F4
D44	E3	Q44	F4
D45	F2	Q45	F4
D46	F3	Q46	F4
D47	F3	Q47	F4
D48	D3	Q48	F3
D49	C3	Q49	F4
D56	D3	Q50	F4
D57	D3	Q51	F3
D58	E4	Q52	B3
D59	F4	Q53A	B3
D60	F3	Q53C	B3
D61	B3	Q54	B2
D62	C3	Q55	A3
D63	D3	Q56	B3
D64	E3	Q57	B2
D65	F3	Q58	B2
D66	F3	Q59	B3
		Q60A	C3
		Q60C	B3
		Q61	C2
		Q62	B3
		Q64	C3
		Q65	C2
		Q66	D3
		Q67A	D3
		Q67C	D3
		Q68	D2
		Q69	D3
		Q70	D3
		Q71	D2
		Q72	E3
		Q73	E3
		Q74A	E3
		Q74C	E3
		Q75	D2
		Q76	E3
		Q78	E3
		Q79	E2
		Q80	F3
		Q81A	F3
		Q81C	F3
		Q82	E2
		Q83	E3
		Q85	F3
		Q86	E2
		Q87	F3
		Q88A	G3
		Q88C	F3
		Q89	F2
		Q90	F3
		Q92	G3
		Q93	F2
		Q94	A4

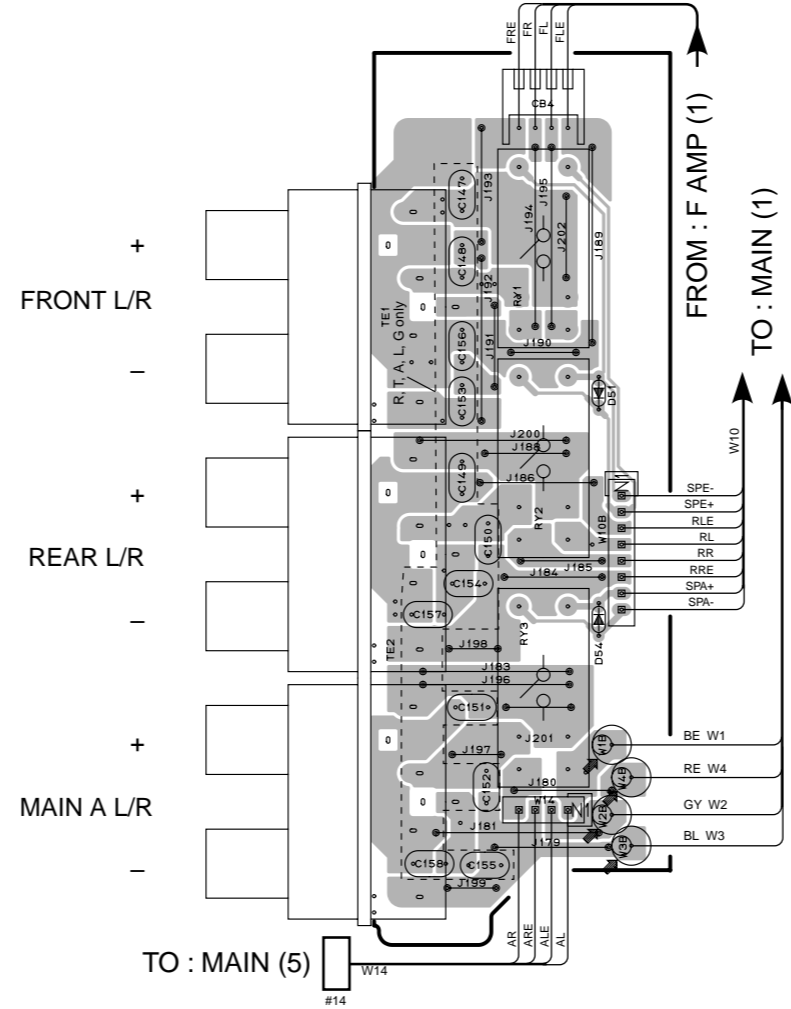
RX-V3000/RX-V3000RDS

PRINTED CIRCUIT BOARD (Foil side)

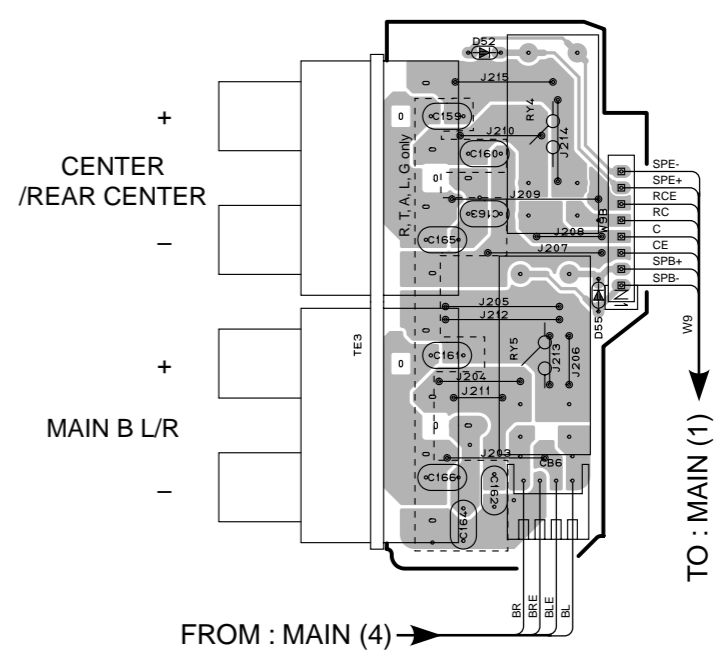
MAIN (2) P.C.B.



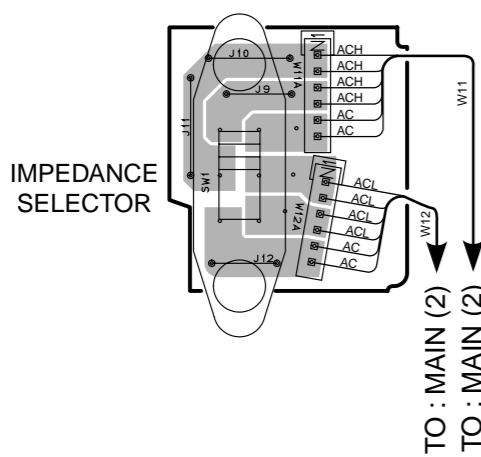
MAIN (4) P.C.B.



MAIN (5) P.C.B.



MAIN (3) P.C.B.

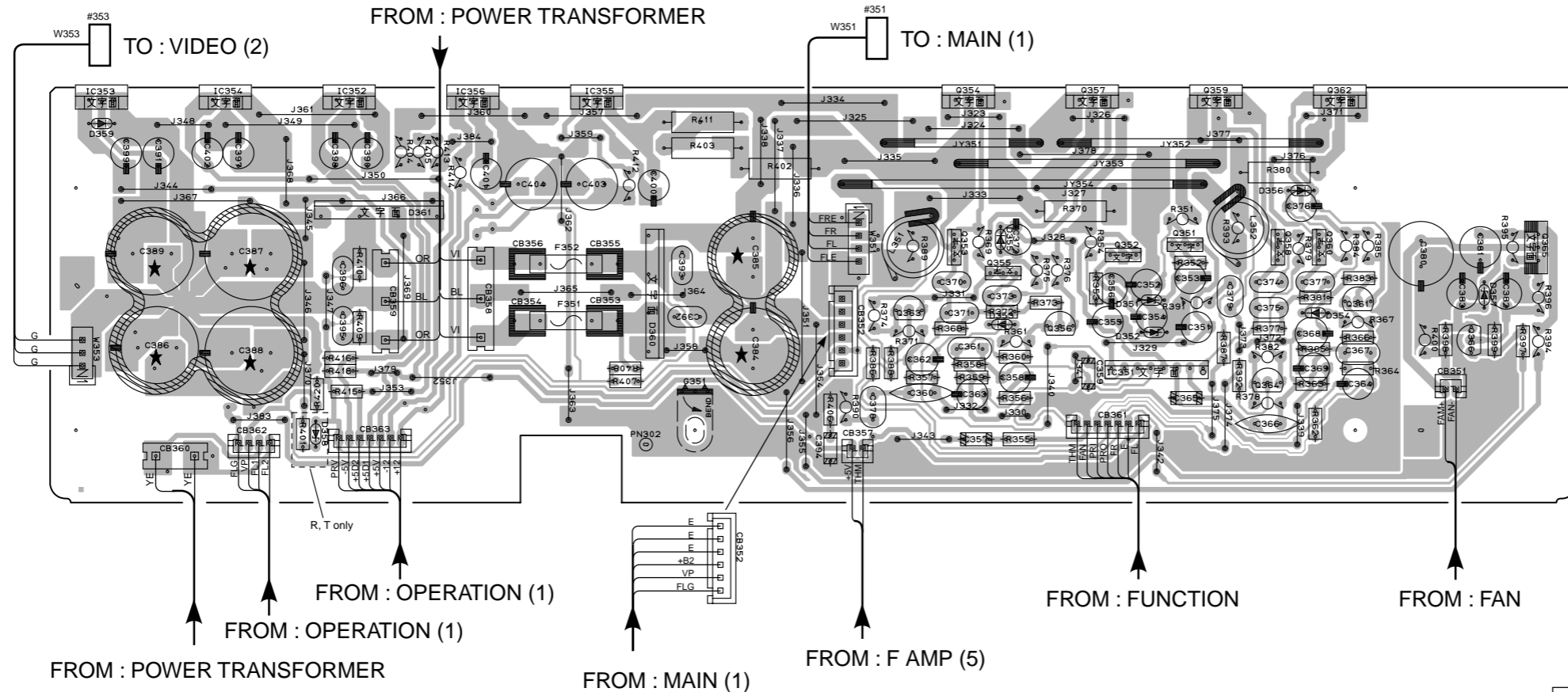


Semiconductor Location

Ref. No.	Location
D51	E2
D52	G1
D53	B2
D54	E3
D55	H2

PRINTED CIRCUIT BOARD (Foil side)

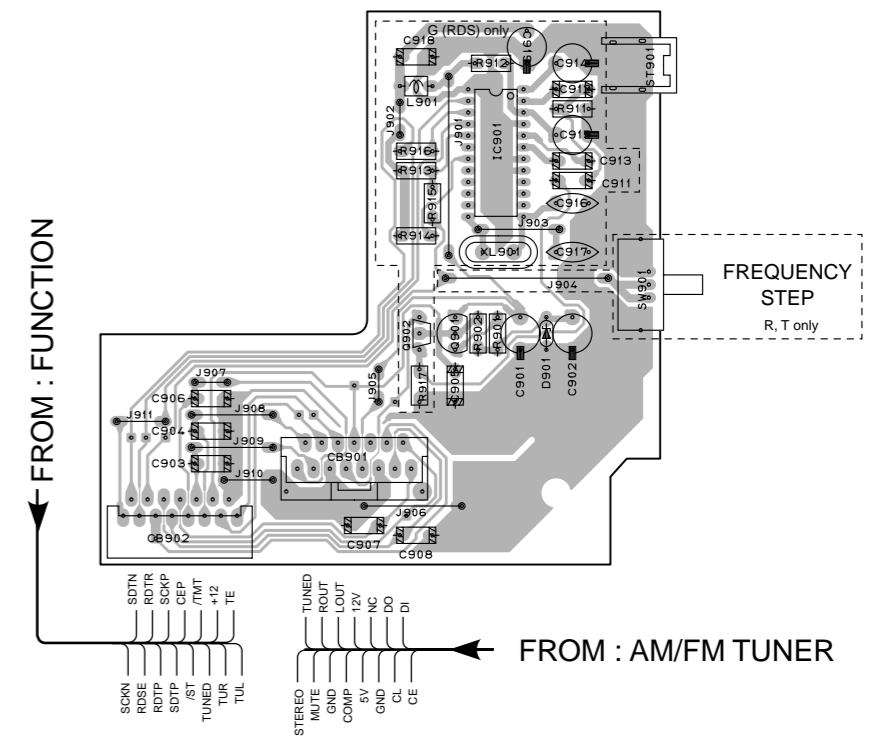
F AMP (1) P.C.B.



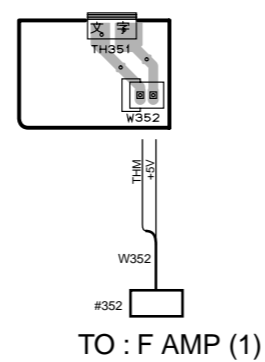
Semiconductor Location

Ref. No.	Location	Ref. No.	Location
D351	E2	Q351	E2
D352	E2	Q352	E2
D353	D2	Q353	D2
D354	E2	Q354	D2
D355	D2	Q355	D2
D356	E2	Q356	D2
D357	F2	Q357	E2
D358	B3	Q358	E2
D359	A2	Q359	E2
D360	C2	Q360	E2
D361	B2	Q361	E2
D901	G5	Q362	E2
		Q363	D2
		Q364	E3
IC351	E2	Q365	F2
IC352	B2	Q366	F2
IC353	A2	Q901	G5
IC354	B2	Q902	G5
IC355	C2		
IC356	C2		
IC901	G4		

F AMP (3) P.C.B.



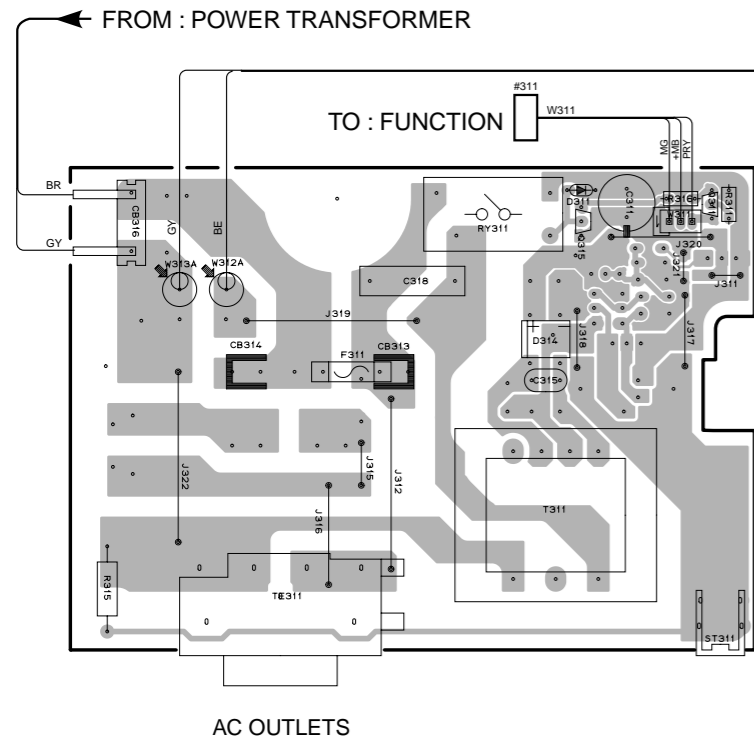
F AMP (5) P.C.B.



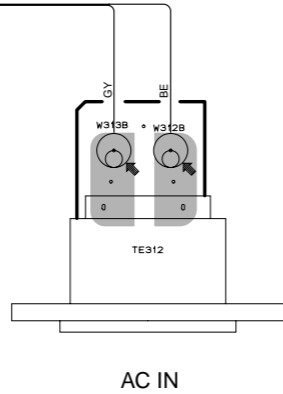
PRINTED CIRCUIT BOARD (Foil side)

● U, C models

F AMP (2) P.C.B.

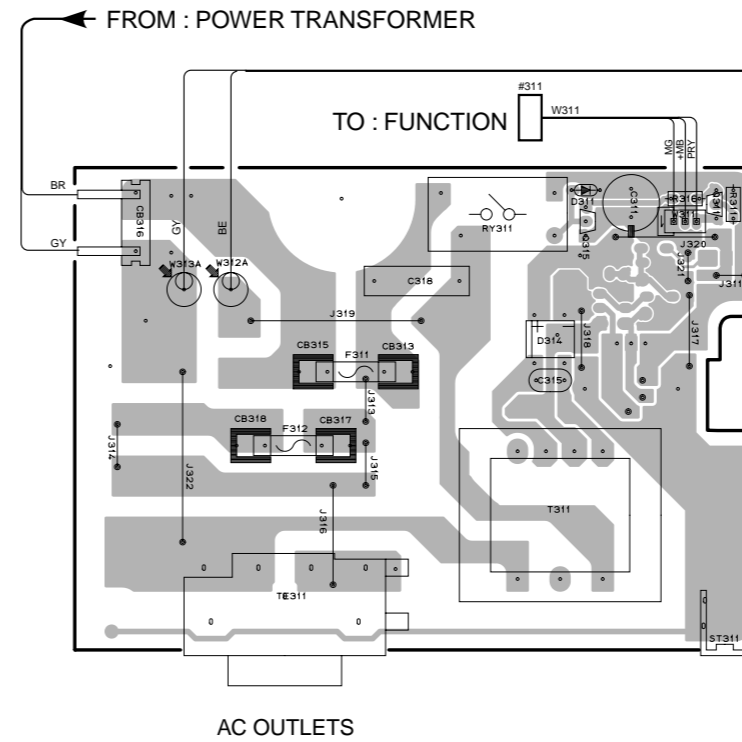


F AMP (4) P.C.B.

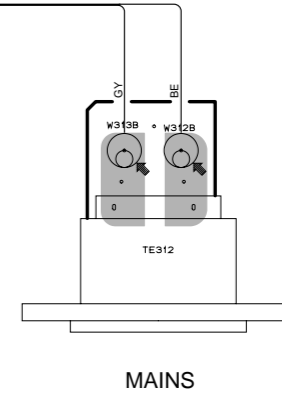


● L, G models

F AMP (2) P.C.B.

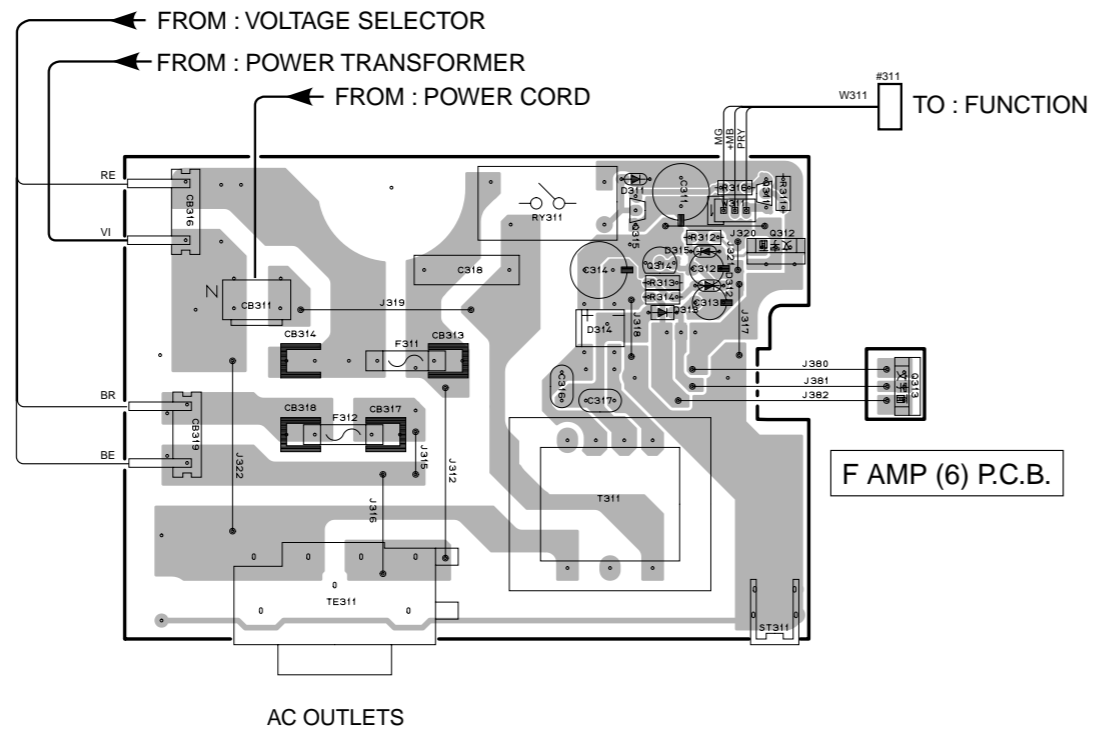


F AMP (4) P.C.B.



● R, T models

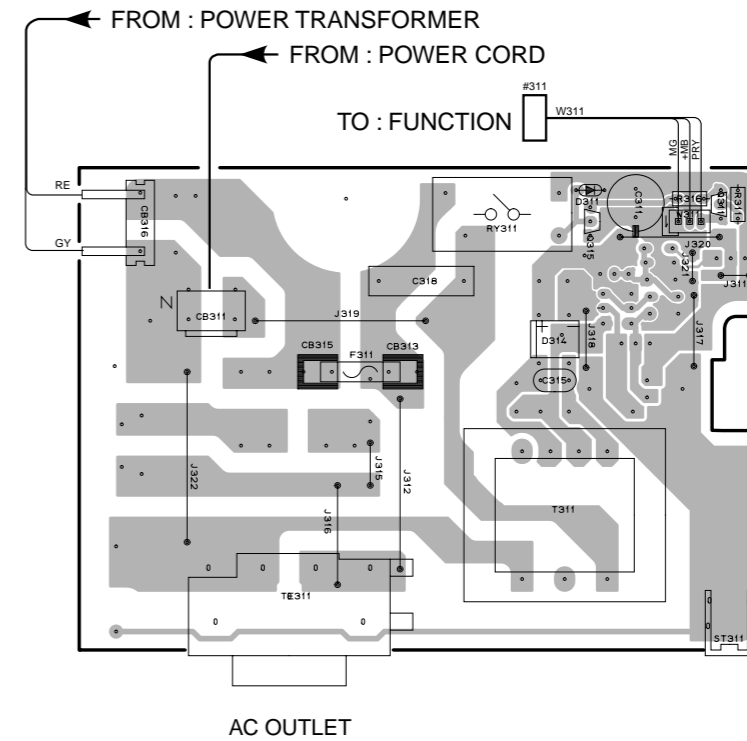
F AMP (2) P.C.B.



F AMP (6) P.C.B.

● A model

F AMP (2) P.C.B.



AC OUTLET